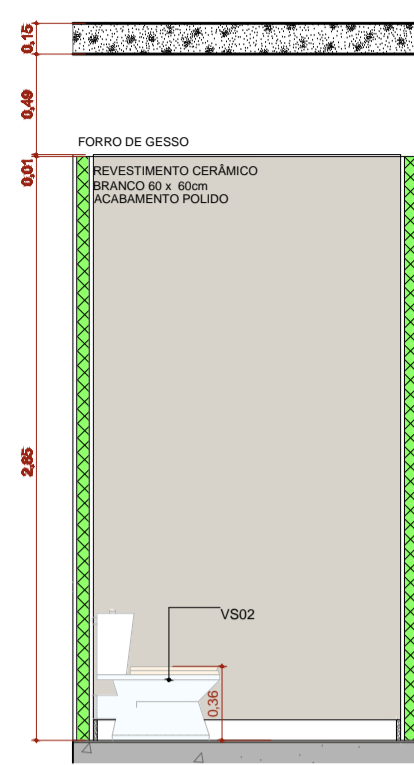
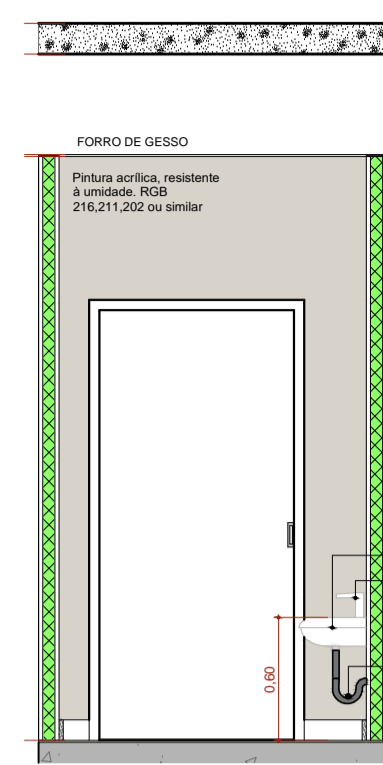


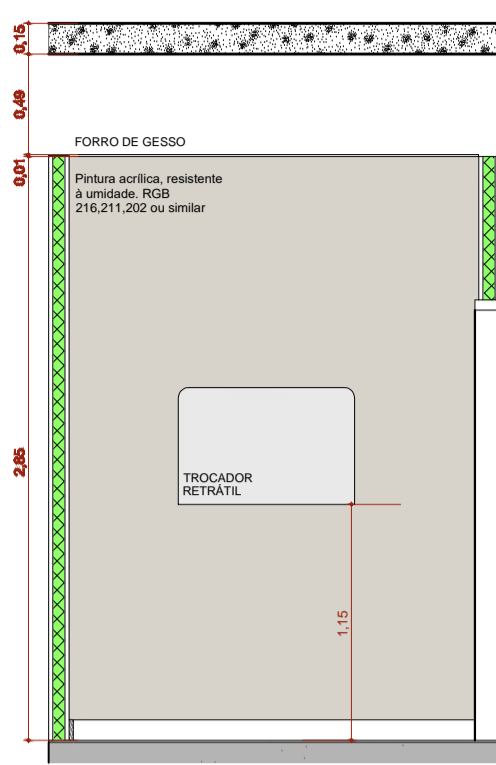
**A.M.1 Sanit. Infantil/Faldário**  
Escala: 1:25



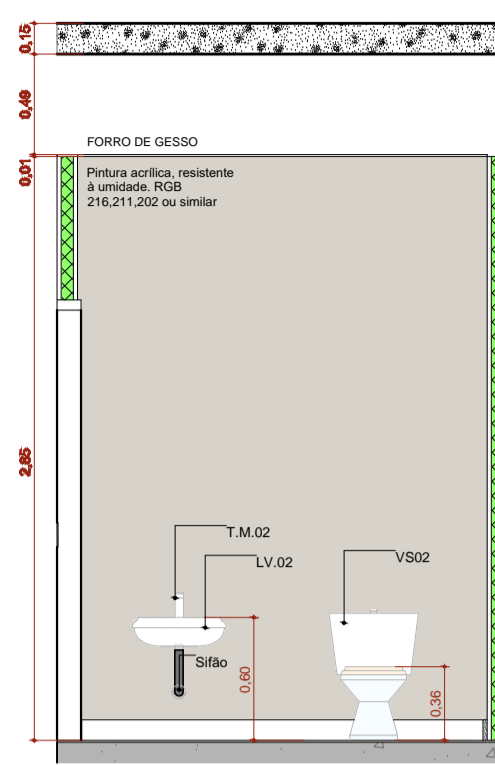
**A.M.01 VISTA 1**  
Escala: 1:25



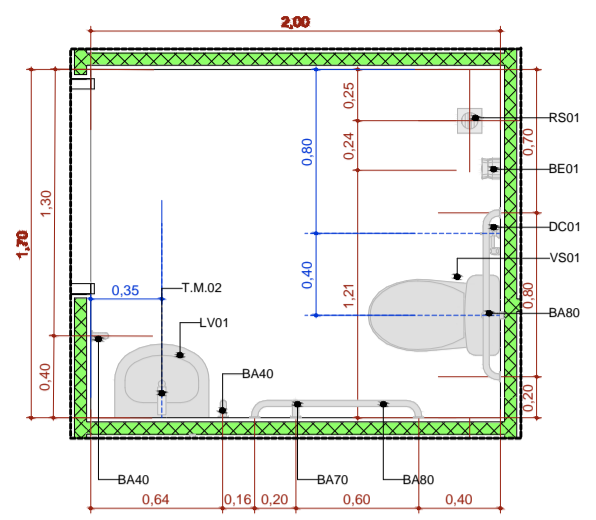
**A.M.01 VISTA 2**  
Escala: 1:25



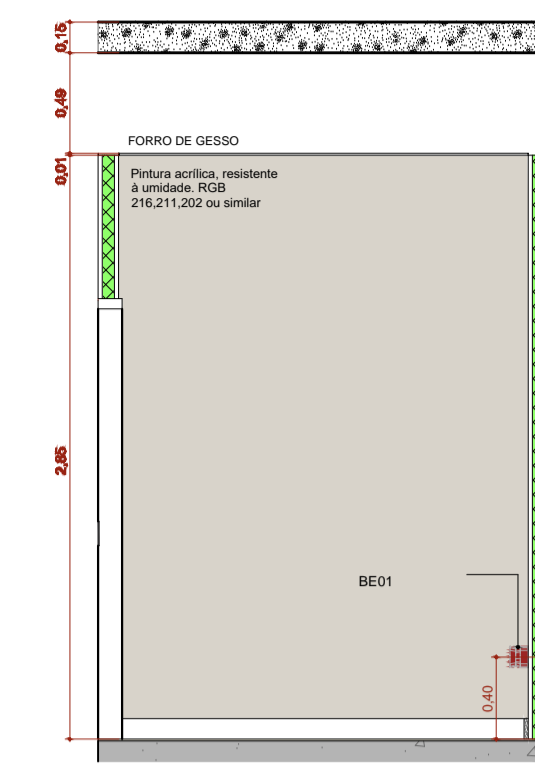
**A.M.01 VISTA 3**  
Escala: 1:25



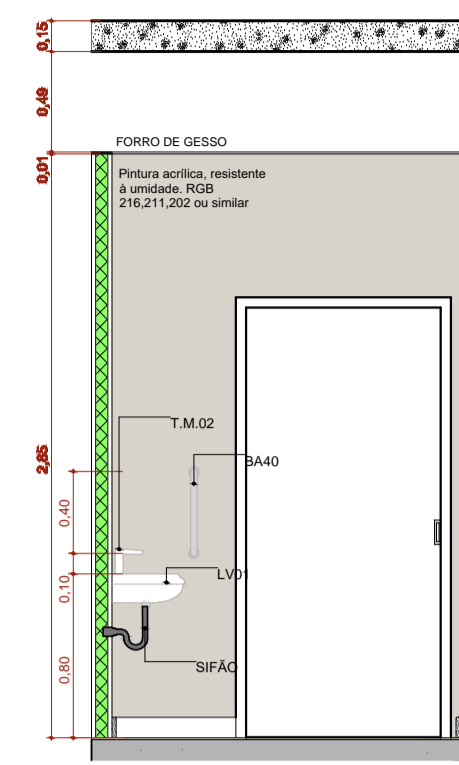
**A.M.01 VISTA 4**  
Escala: 1:25



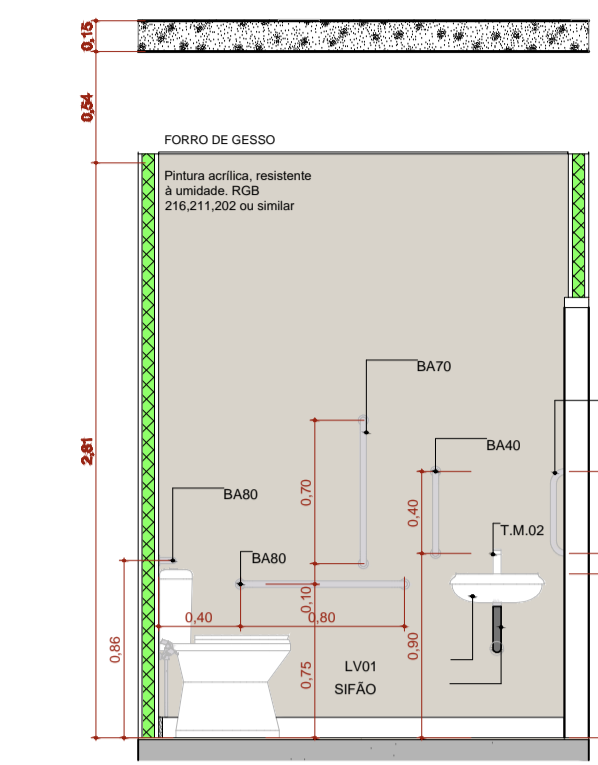
**A.M.2 Sanitário PCD Fem.**  
Escala: 1:25



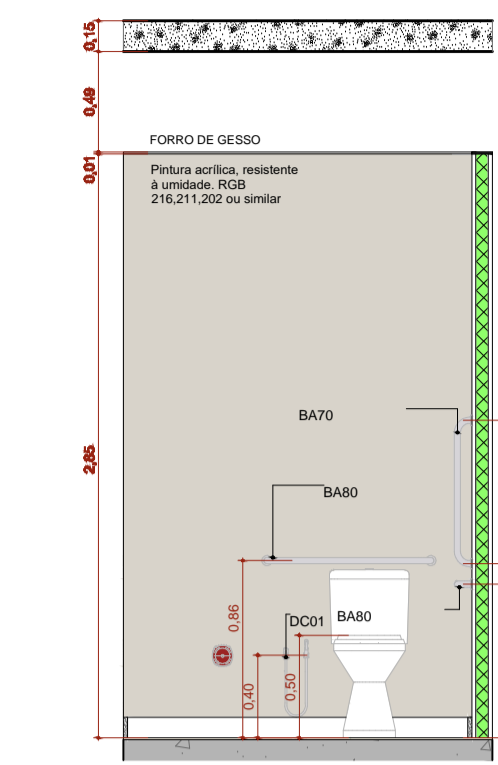
**A.M.02 VISTA 1**  
Escala: 1:25



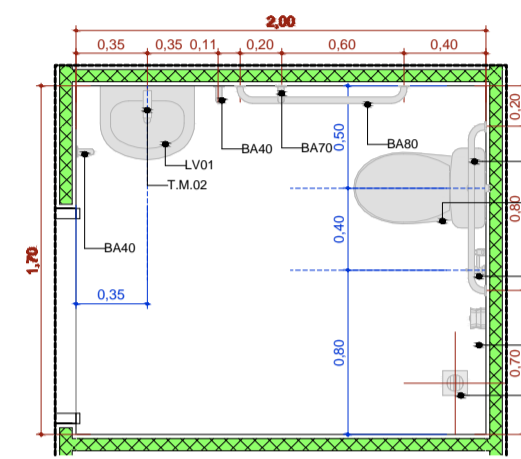
**A.M.02 VISTA 2**  
Escala: 1:25



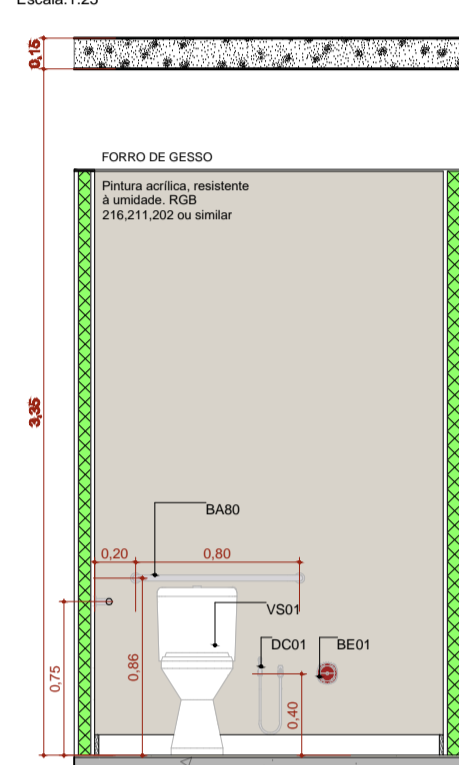
**A.M.02 VISTA 3**  
Escala: 1:25



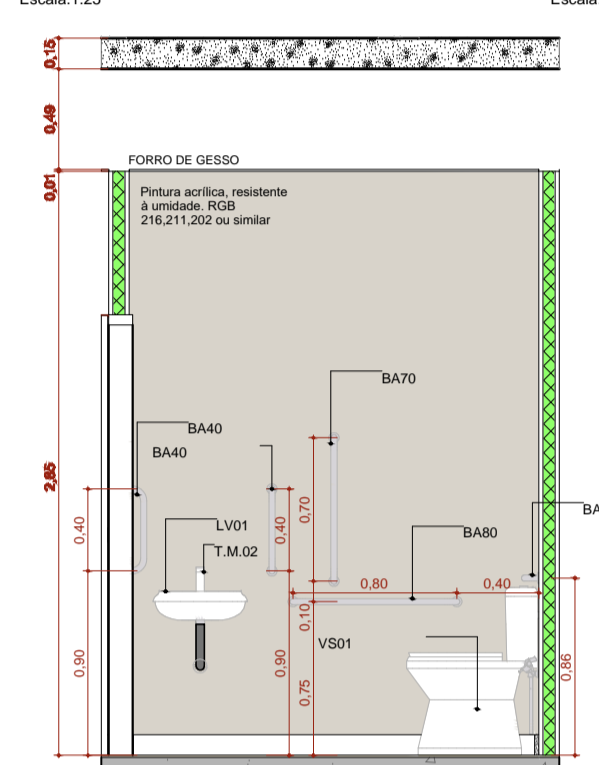
**A.M.02 VISTA 4**  
Escala: 1:25



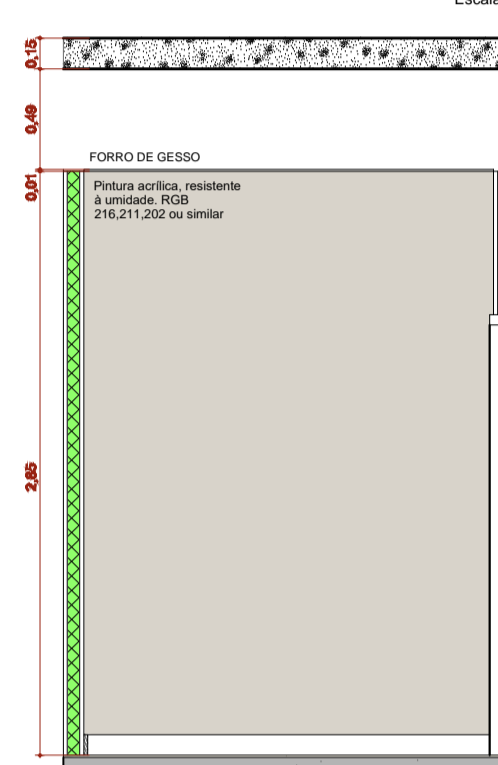
**A.M.3 Sanitário PCD Masc.**  
Escala: 1:25



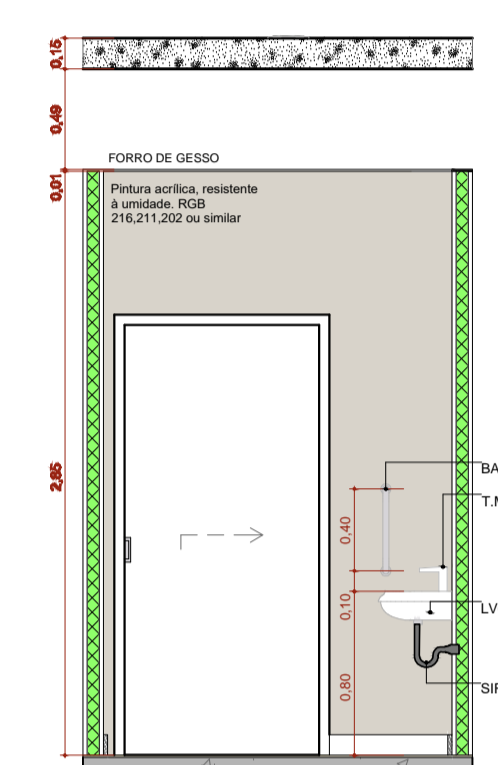
**A.M.03 VISTA 1**  
Escala: 1:25



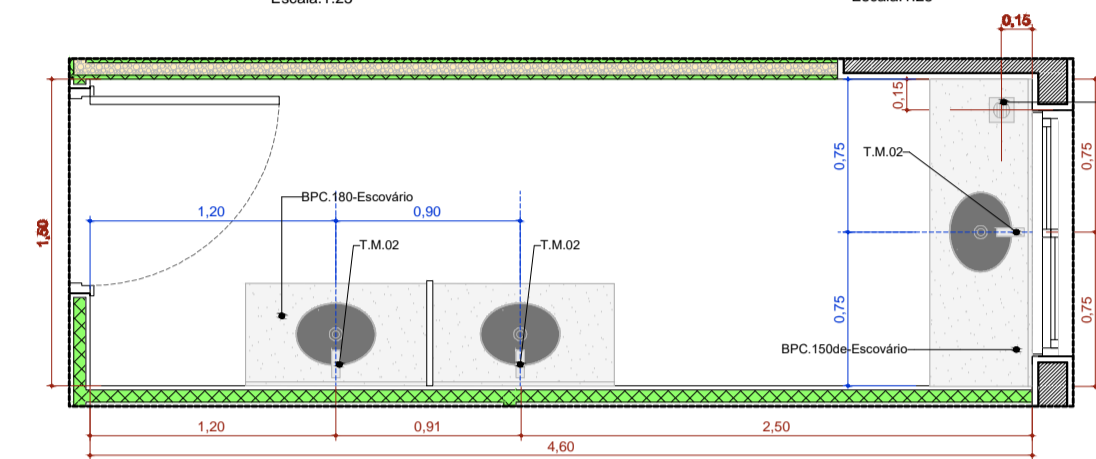
**A.M.03 VISTA 2**  
Escala: 1:25



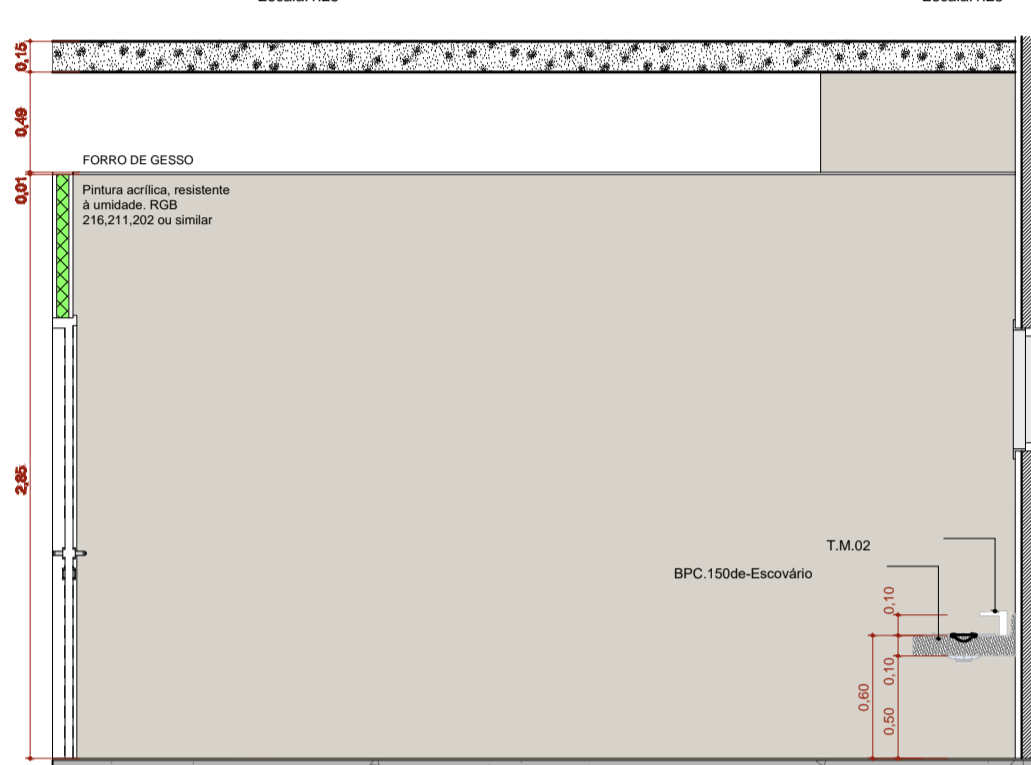
**A.M.03 VISTA 3**  
Escala: 1:25



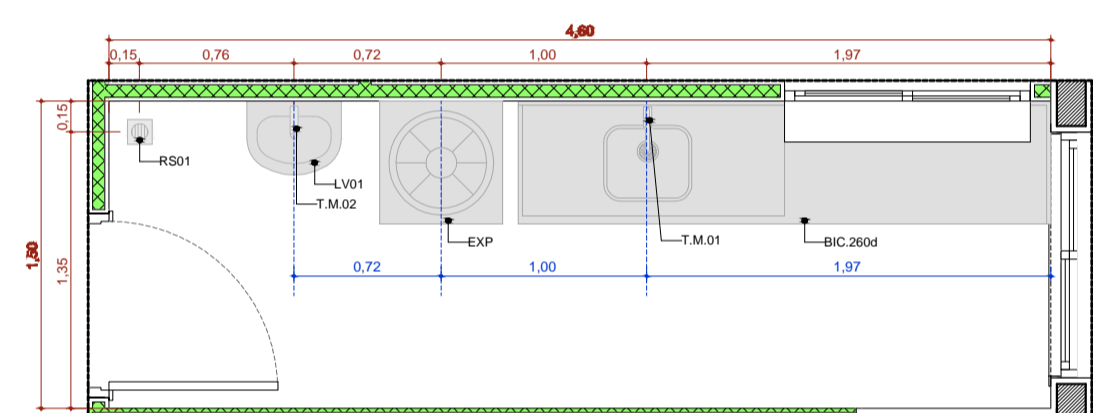
**A.M.03 VISTA 4**  
Escala: 1:25



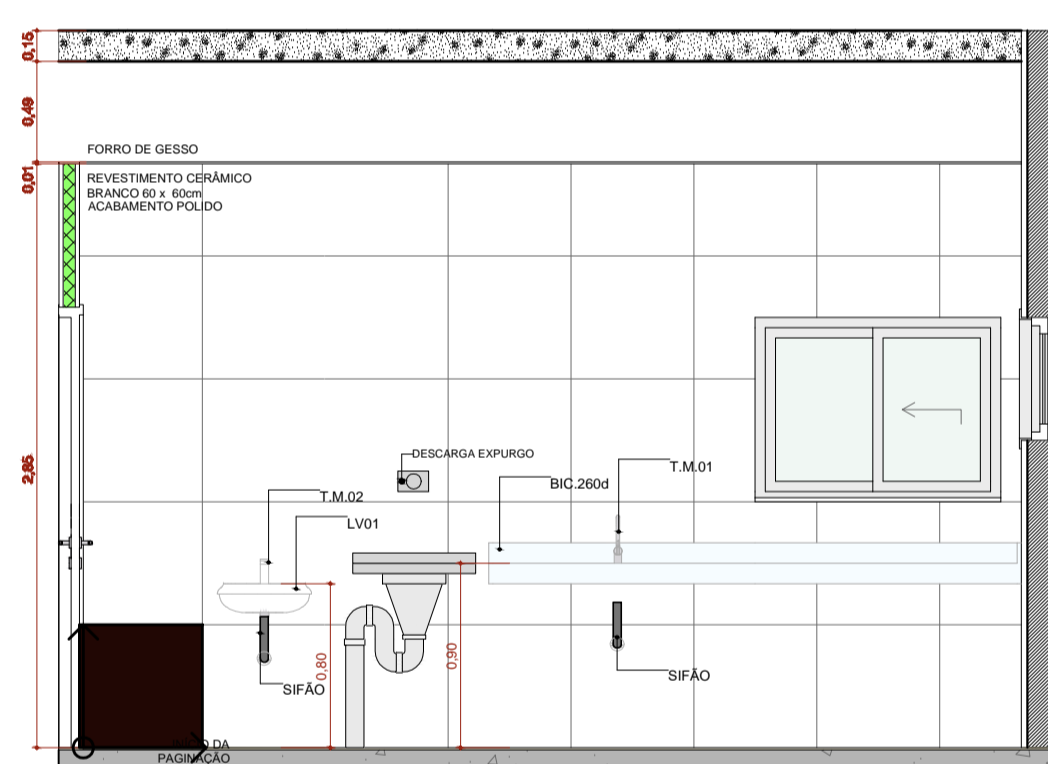
**A.M.4 Educação em Saúde Bucal (Escovário)**  
Escala: 1:25



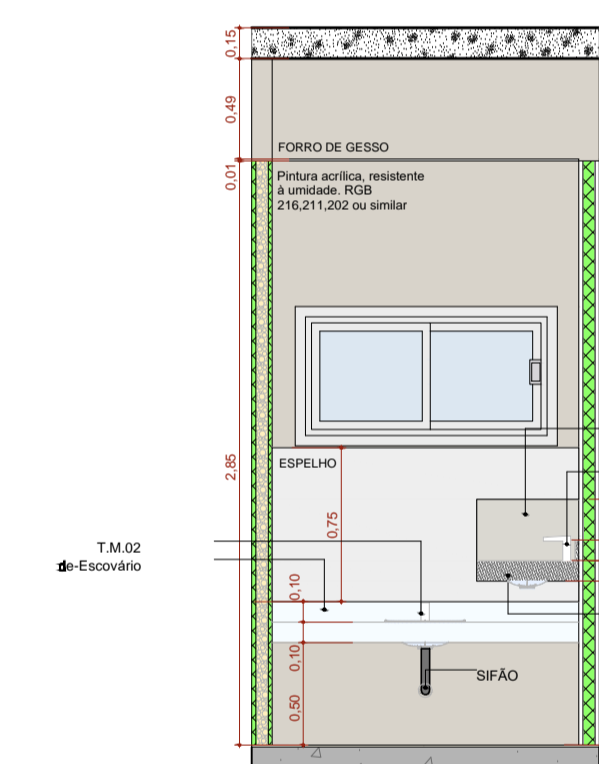
**A.M.04 VISTA 1**  
Escala: 1:25



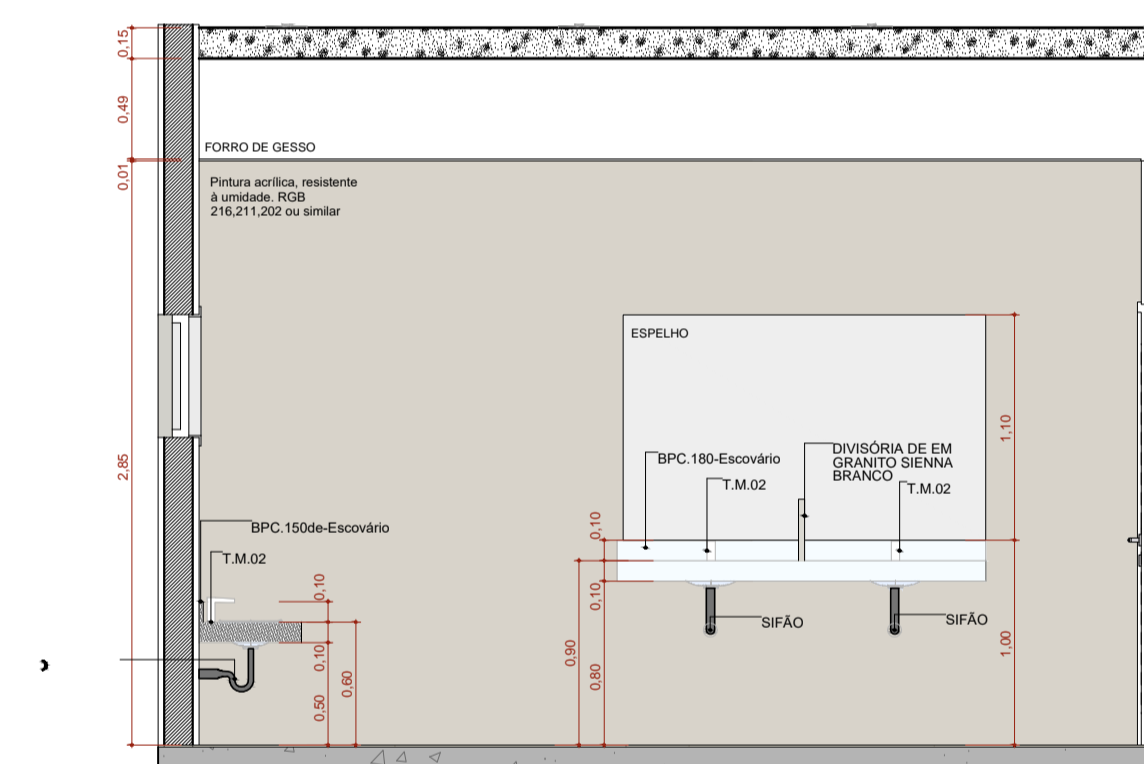
**A.M.5 Expurgo**  
Escala: 1:25



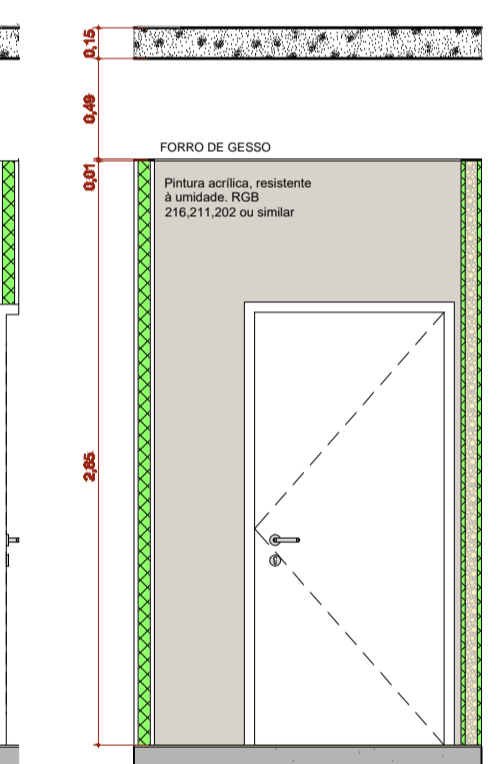
**A.M.05 VISTA 1**  
Escala: 1:25



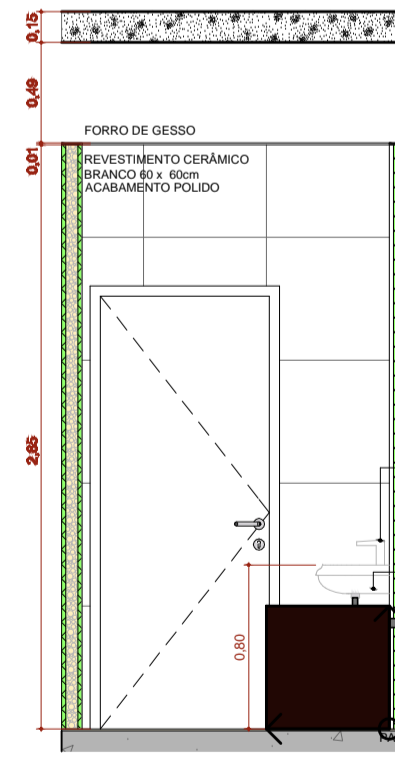
**A.M.04 VISTA 2**  
Escala: 1:25



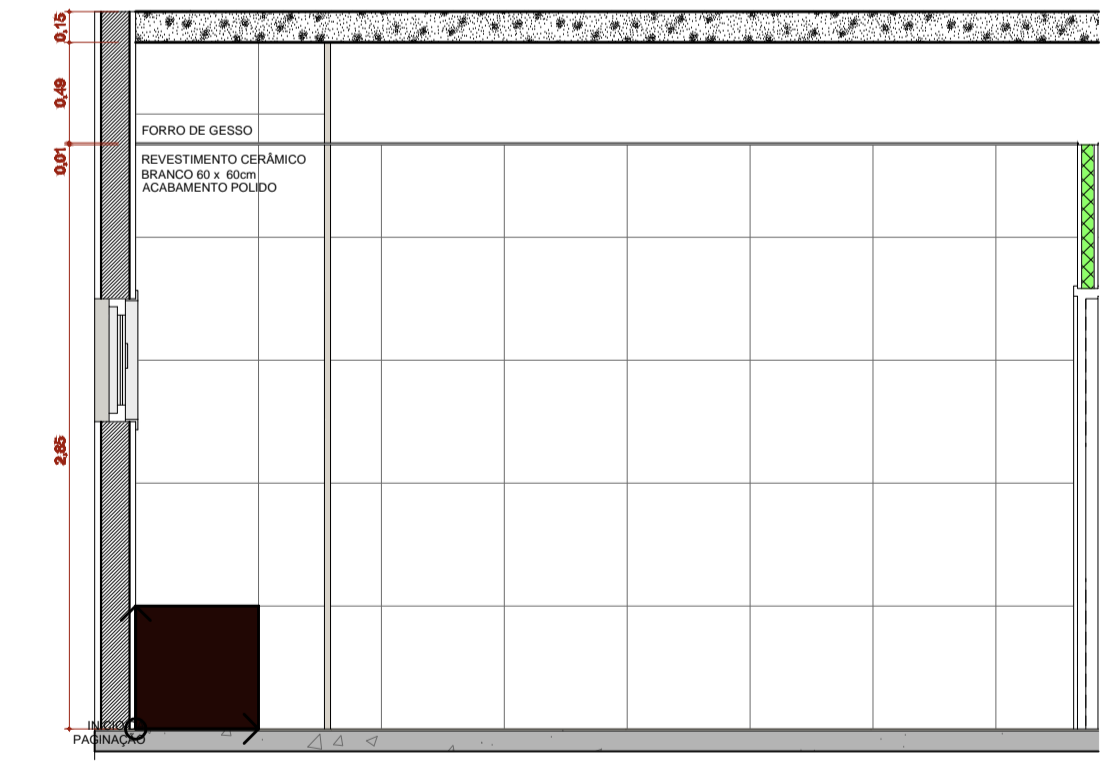
**A.M.04 VISTA 3**  
Escala: 1:25



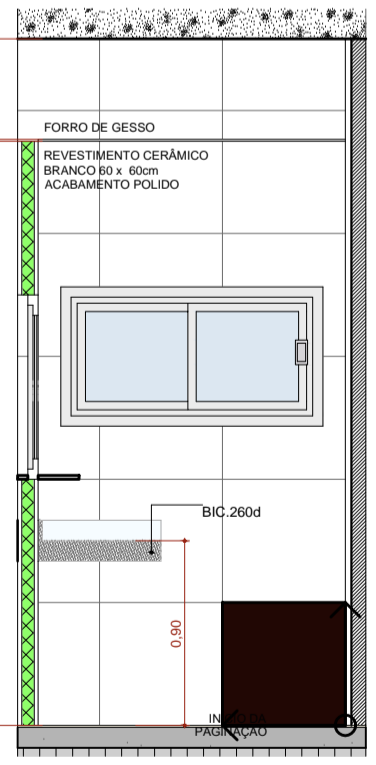
**A.M.04 VISTA 4**  
Escala: 1:25



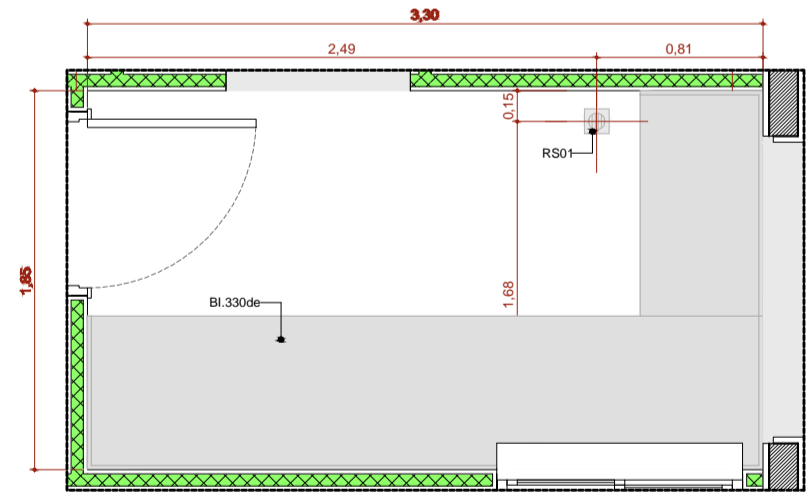
**A.M.05 VISTA 2**  
Escala: 1:25



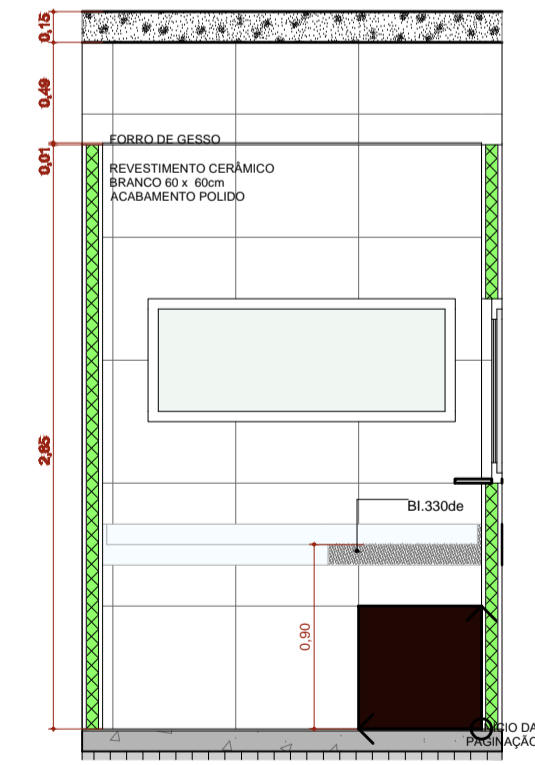
**A.M.05 VISTA 3**  
Escala: 1:25



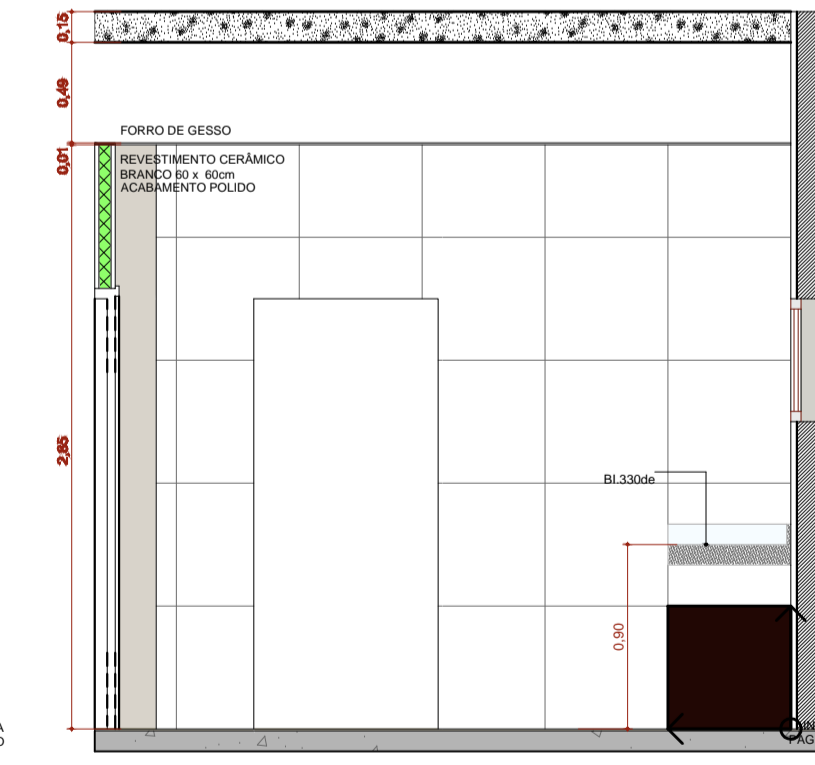
**A.M.05 VISTA 4**  
Escala: 1:25



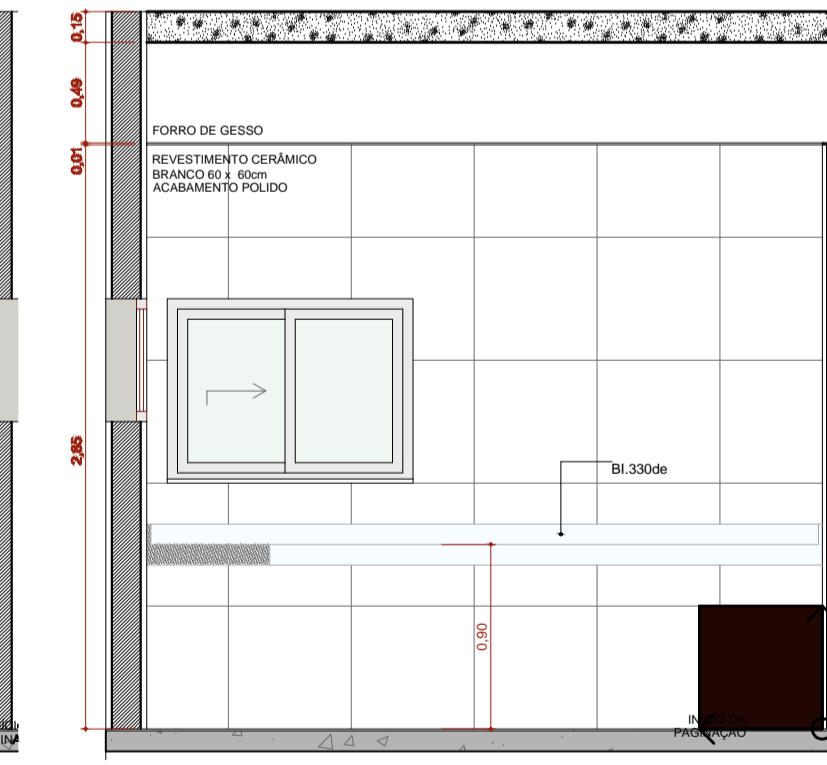
**A.M.6 Esterilização**  
Escala: 1:25



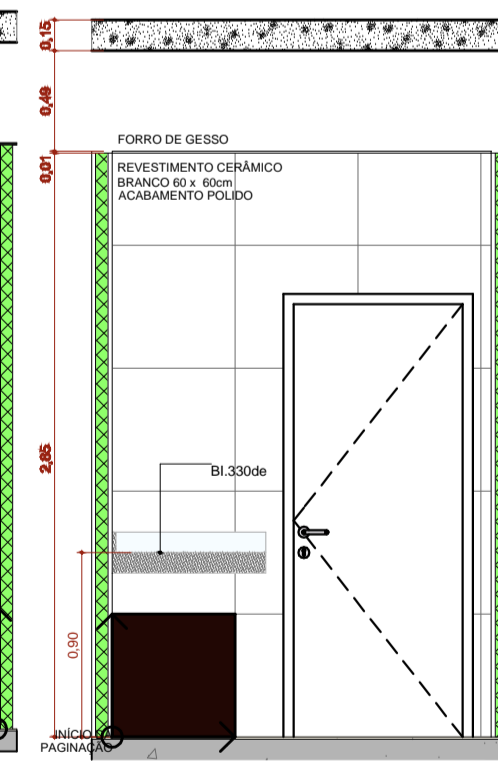
**A.M.06 VISTA 1**  
Escala: 1:25



**A.M.06 VISTA 2**  
Escala: 1:25



**A.M.06 VISTA 3**  
Escala: 1:25



**A.M.06 VISTA 4**  
Escala: 1:25

TÍTULO DO PROJETO  
**UNIDADE BÁSICA DE SAÚDE - PORTE 1**

PROJETO DE ARQUITETURA  
**MINISTÉRIO DA SAÚDE**  
SECRETARIA DE ATENÇÃO PRIMÁRIA À SAÚDE

PROJETO DE ARQUITETURA  
**SECRETARIA MUNICIPAL DE CEBAS, VIAÇÃO, TRÂNSITO E TRANSPORTE**  
DEPARTAMENTO DE ENGENHARIA

DATA: FEVEREIRO 2025  
ÁREA TERRENO: 1.400,00 m<sup>2</sup>  
ÁREA APLICAÇÃO: 471,00 m<sup>2</sup>  
ESCALA: 1:50

RESP. TÉCNICOS:  
ENGR. CIVIL THIAGO DIAS RIBEIRO  
ENGR. CIVIL BRUNO LOPES DE OLIVEIRA

PROPRIETÁRIO:  
PREFEITURA MUNICIPAL DE ROSÁRIO DO SUL  
MAYCON DOS SANTOS DA LUZ - PREFEITO MUNICIPAL

FRANCHA  
**1/1**

DESCRIÇÃO DA ETAPA  
**PROJETO EXECUTIVO**

NOME: FRANCHA - PROJETO  
**M5\_UBS1\_PE\_AQ\_11.12\_R00**

REVISÃO: R01  
UNIDADE: METROS  
DATA: 04/09/2024  
ESCALA: INDICADA

DIREITOS AUTORAIS RESERVADOS CONFORME LEGISLAÇÃO NACIONAL E INTERNACIONAL  
FOLHA Nº 12 DE 14