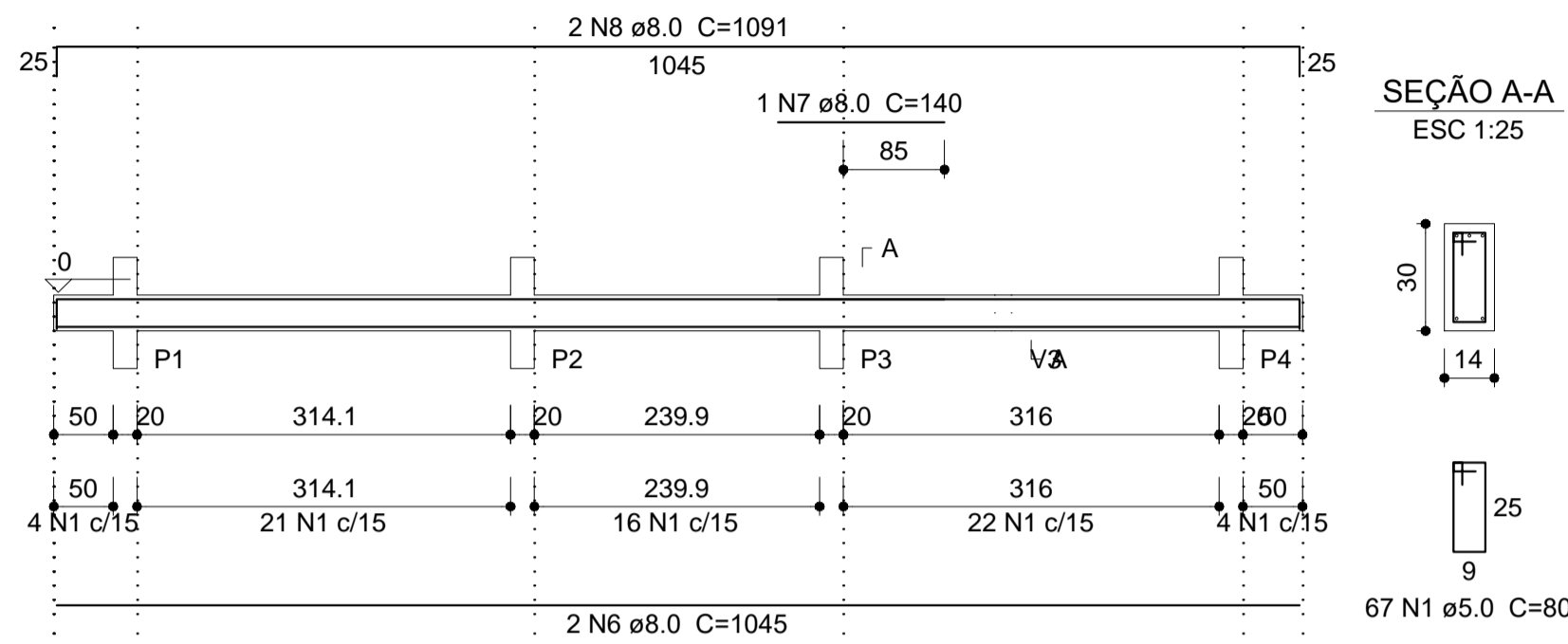
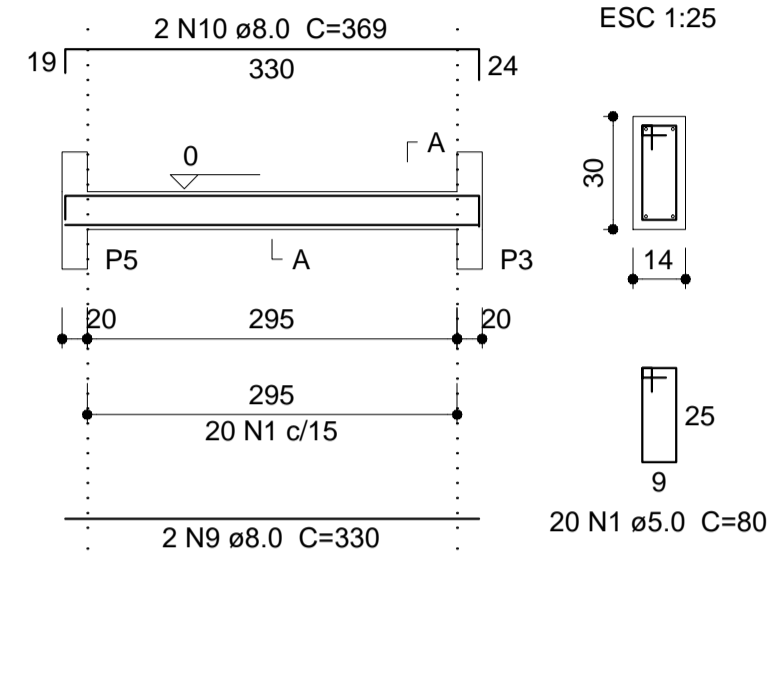


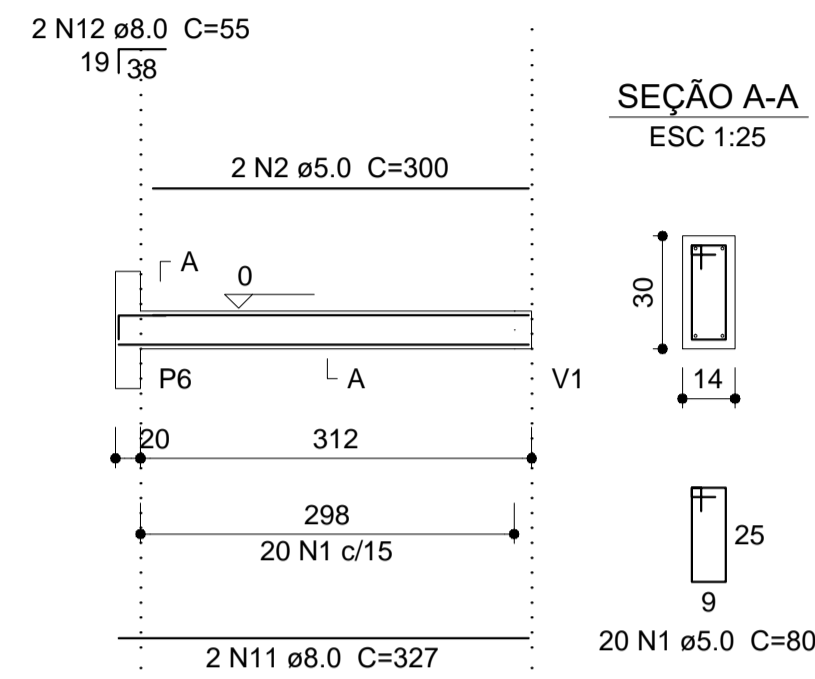
V1
ESC 1:75



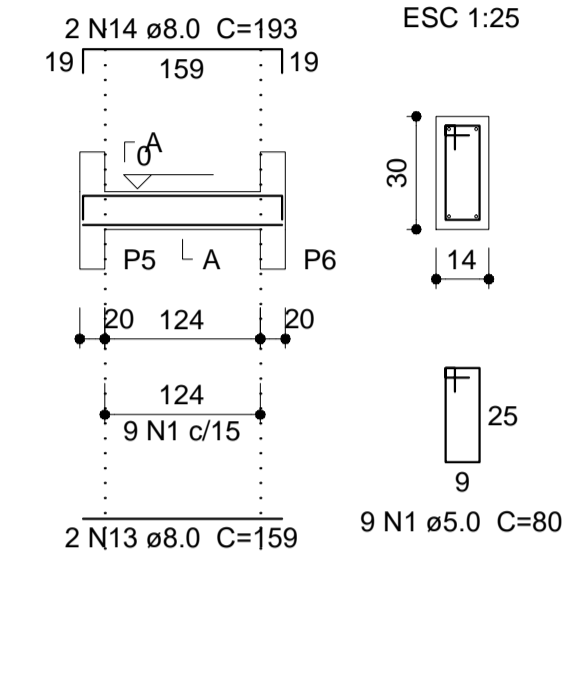
V2
ESC 1:75



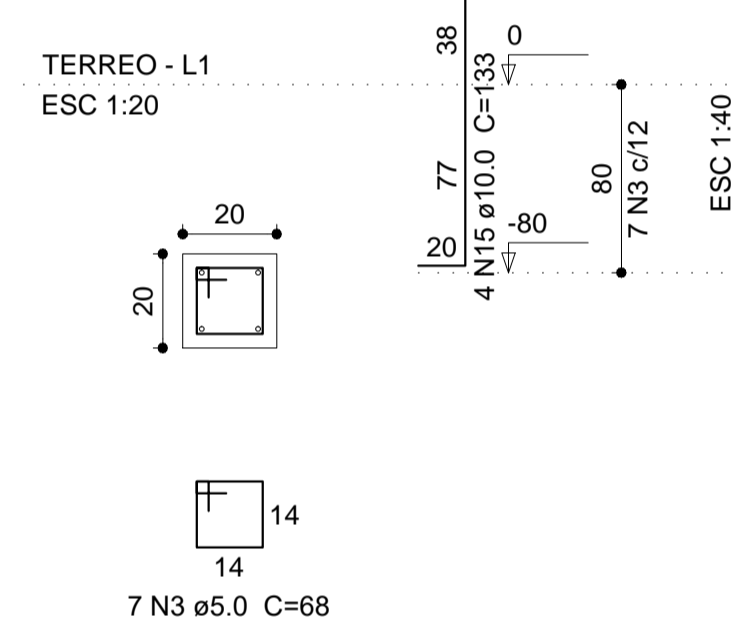
V3
ESC 1:75



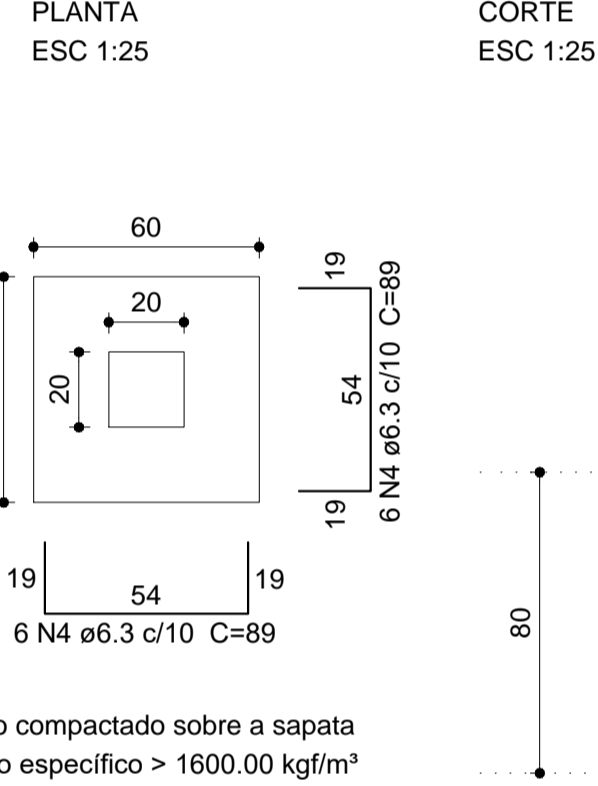
V4
ESC 1:75



P1=P2=P5=P6



S1=S2=S5=S6



Relação do aço

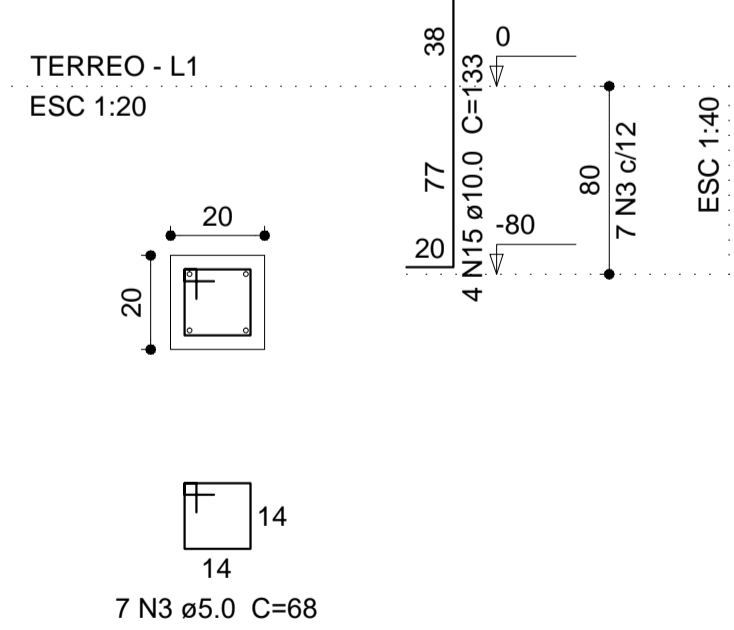
| AÇO | N | DIAM (mm) | QUANT (Barras) | UNIT (cm) | C.TOTAL (cm) |
|------|----|-----------|----------------|-----------|--------------|
| CA60 | 1 | 5.0 | 116 | 80 | 9280 |
| | 2 | 5.0 | 2 | 300 | 600 |
| | 3 | 5.0 | 42 | 68 | 2856 |
| CA50 | 4 | 6.3 | 48 | 89 | 4272 |
| | 5 | 6.3 | 28 | 104 | 2912 |
| | 6 | 8.0 | 2 | 1045 | 2090 |
| | 7 | 8.0 | 1 | 140 | 140 |
| | 8 | 8.0 | 2 | 1091 | 2182 |
| | 9 | 8.0 | 2 | 330 | 660 |
| | 10 | 8.0 | 2 | 369 | 738 |
| | 11 | 8.0 | 2 | 327 | 654 |
| | 12 | 8.0 | 2 | 55 | 110 |
| | 13 | 8.0 | 2 | 159 | 318 |
| | 14 | 8.0 | 2 | 193 | 386 |
| | 15 | 10.0 | 24 | 133 | 3192 |

Resumo do aço

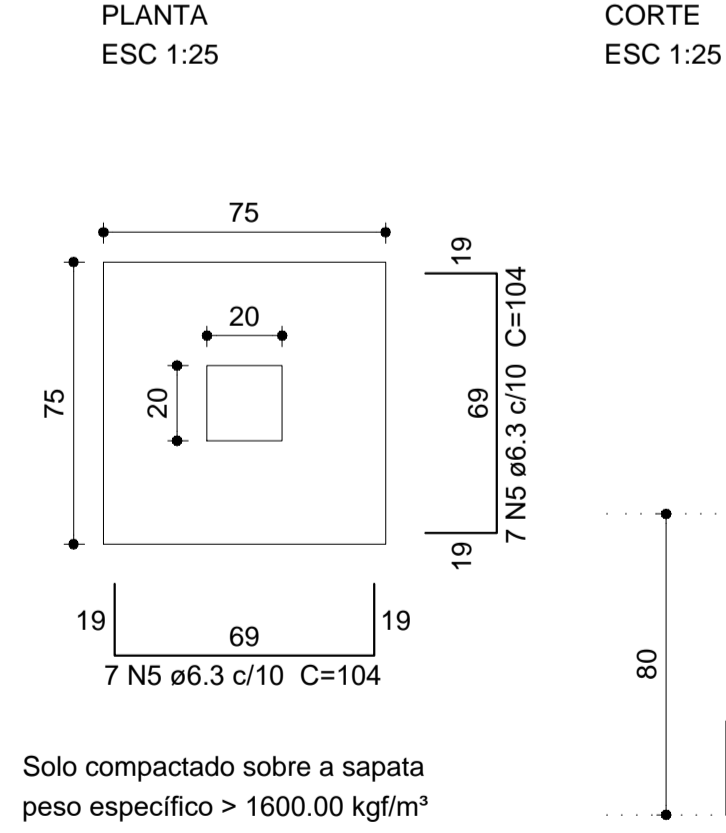
| AÇO | DIAM (mm) | C.TOTAL (m) | PESO + 10% (kg) |
|-----------------|-----------|-------------|-----------------|
| CA50 | 6.3 | 71.9 | 19.3 |
| | 8.0 | 72.8 | 31.6 |
| | 10.0 | 32 | 21.6 |
| CA60 | 5.0 | 127.4 | 21.6 |
| PESO TOTAL (kg) | | | |
| CA50 | | 72.6 | |
| CA60 | | 21.6 | |

Volume de concreto (C-25) = 0.98 m³
 Volume de concreto (C-20) = 0.64 m³
 Área de forma = 21.66 m²

P3=P4



S3=S4



| | | |
|---|--|---------------------------------|
| PROJETO ESTRUTURAL | | USO DA CONSTRUÇÃO SAMU |
| ESPECIFICAÇÕES DETALHES | | TIPO DE CONSTRUÇÃO ALVENARIA |
| ENDEREÇO RUA AMARO SOUTO 1663 | | ÁREA |
| PROPRIETÁRIO | | DATA 23/08/2024 |
| PREFEITURA MUNICIPAL DE ROSÁRIO DO SUL | | ESCALA 1:50 |
| PROJETO | | 03 |
| Flavio José Munhoz Mayer Eng. Civil CREA 57117-D | | |