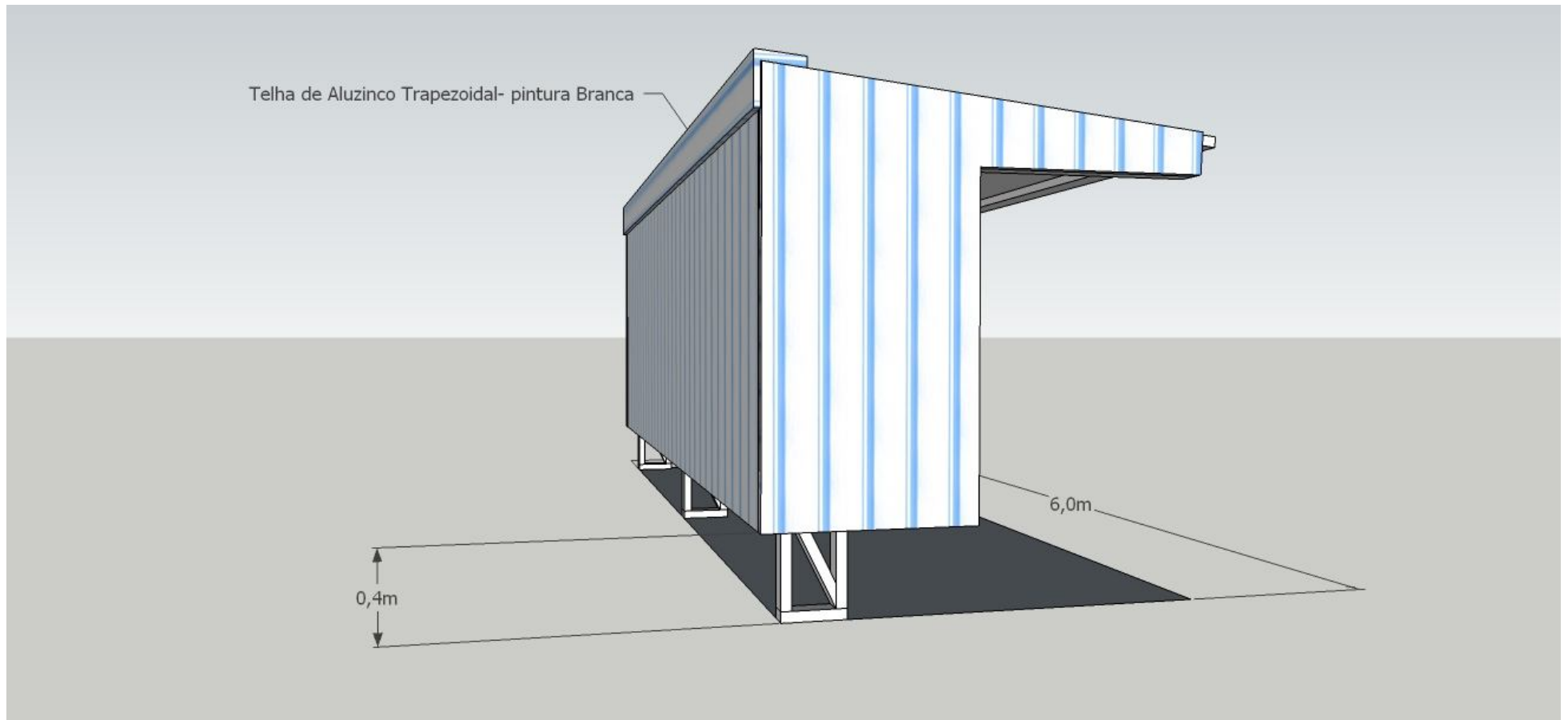
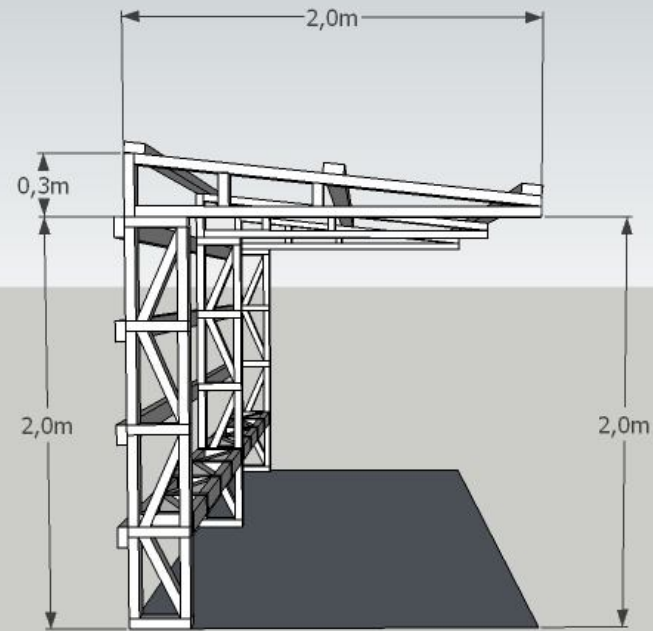
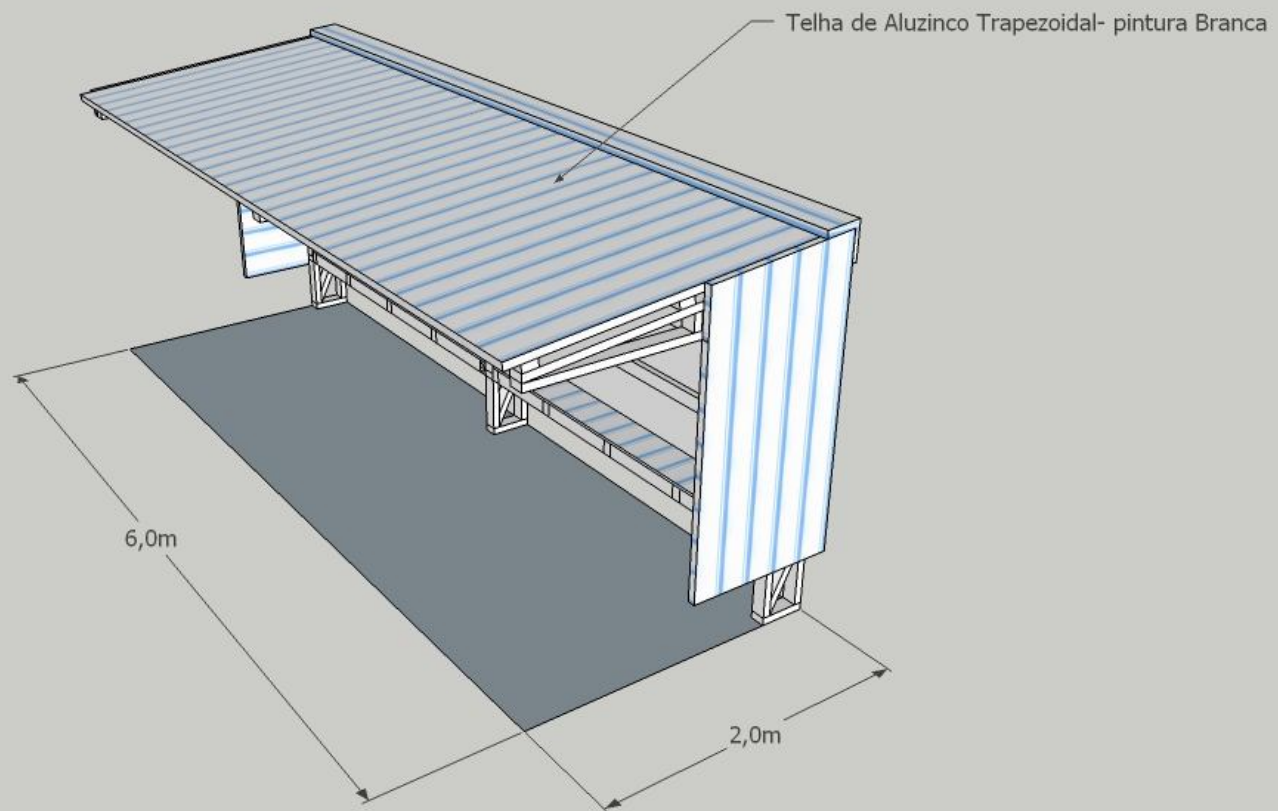
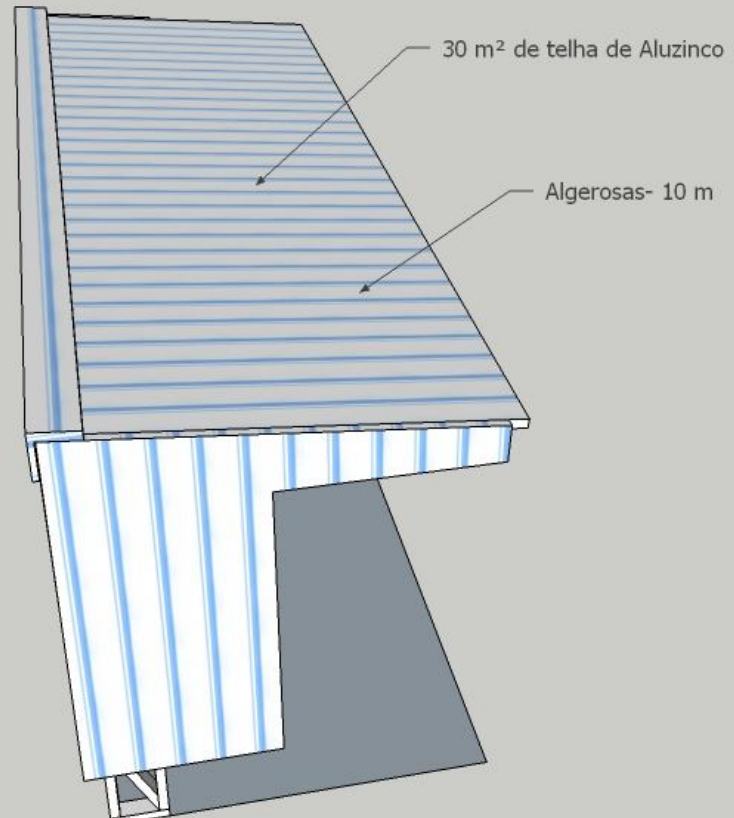


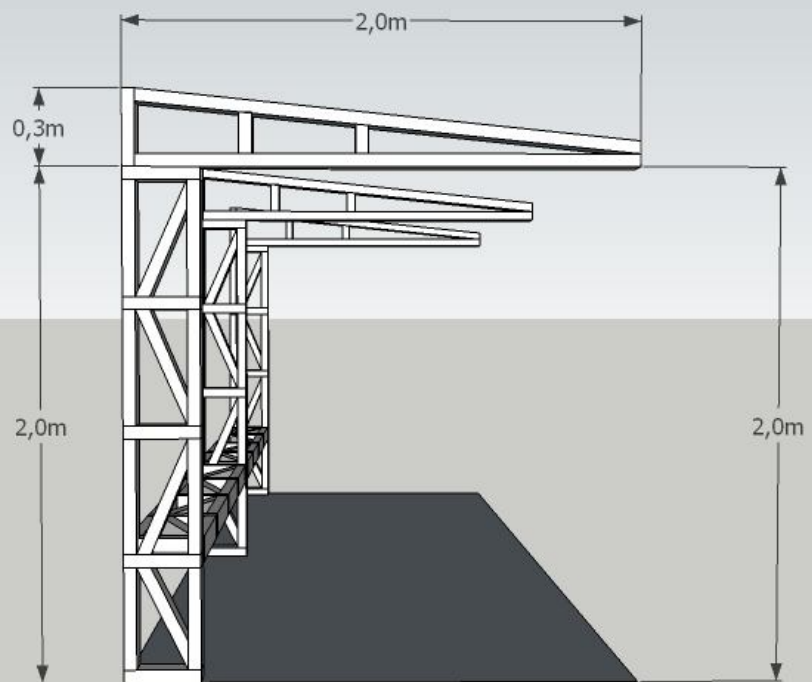
ANEXO VIII – PROJETO

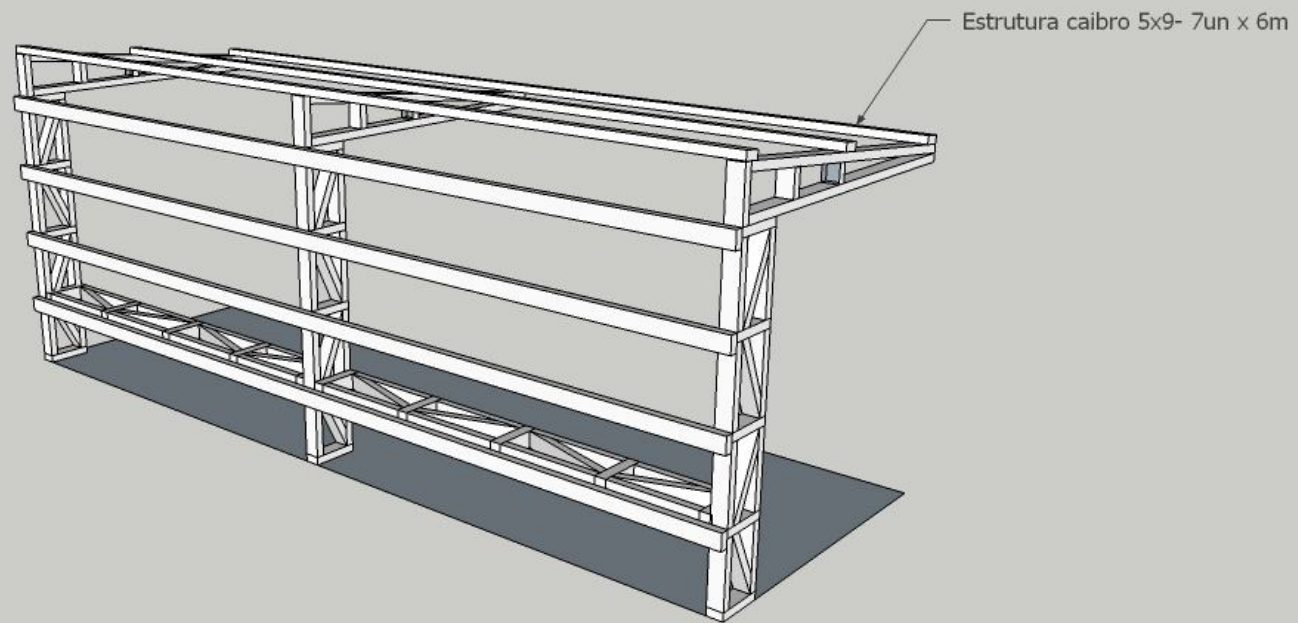


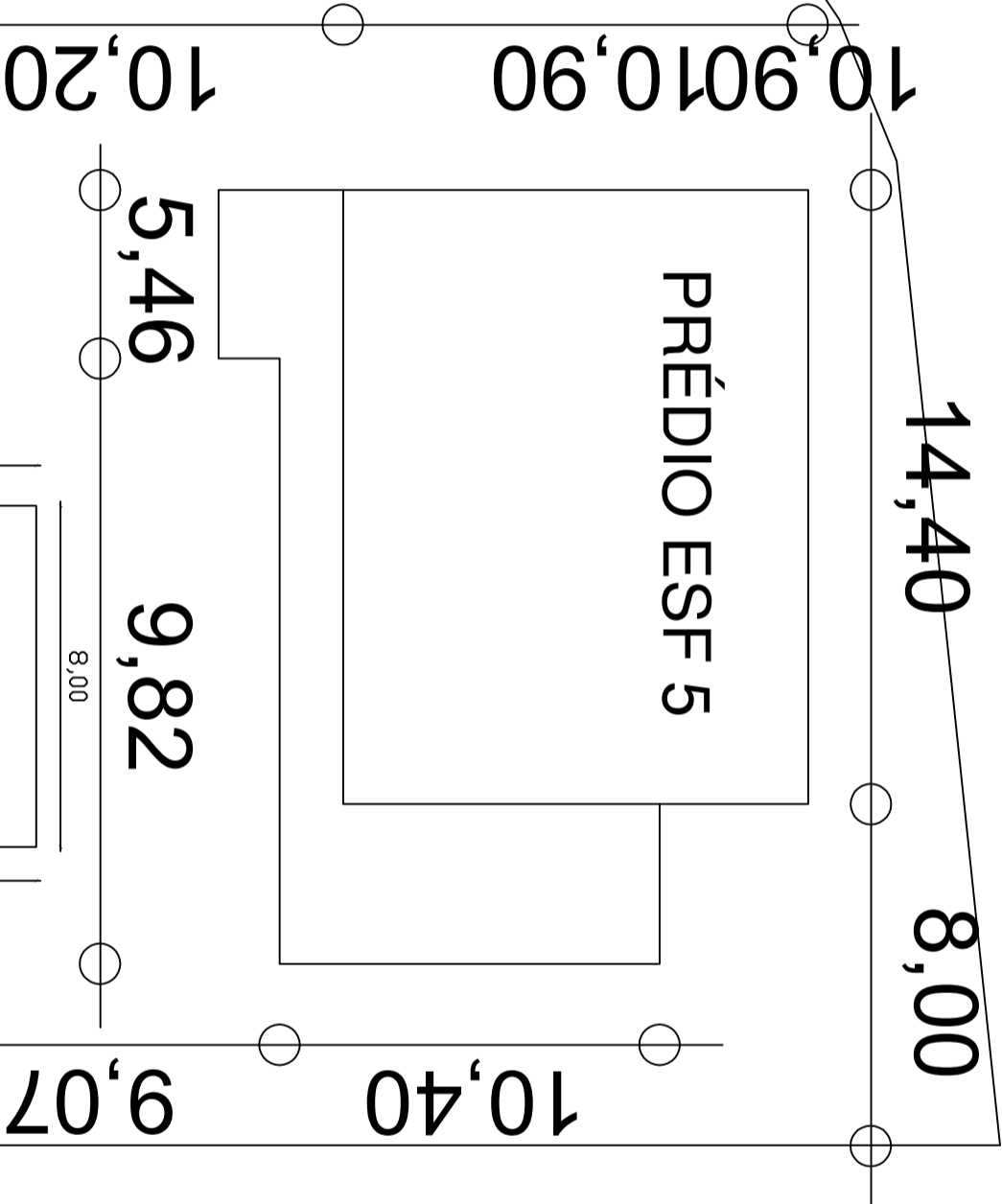




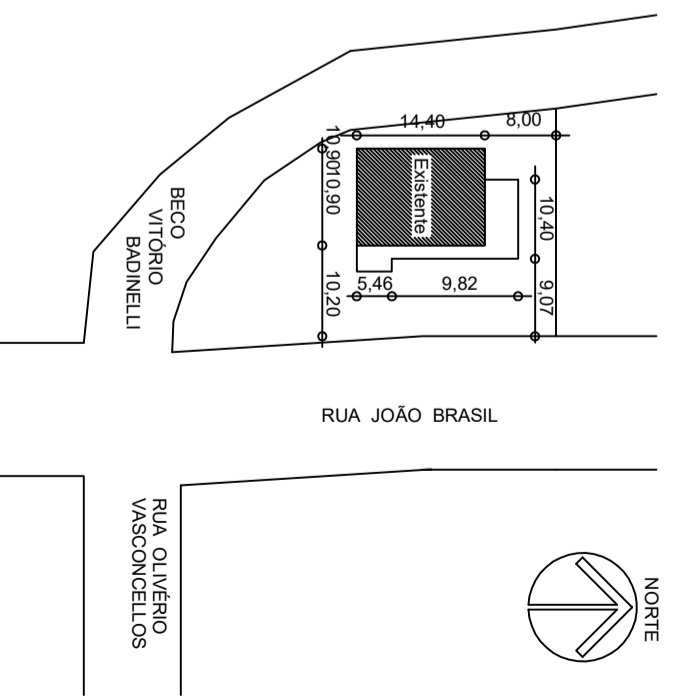








RUA JOÃO BRASIL



PREFEITURA MUNICIPAL DE ROSÁRIO DO SUL
 ESTADO DO RIO GRANDE DO SUL - BRASIL
 SECRETARIA MUNICIPAL DE OBRAS, VIÇÃO, TRÁNSITO E TRANSPORTE
 DEPARTAMENTO DE ENGENHARIA

PROJETO:
 ABRIGO ESF 5

ENDREÇO:
 RUA JOÃO BRASIL Nº 80

PROPRIETÁRIO:
 Prefeitura Municipal Rosário do Sul

RESP. TÉCNICO:
 MORAIS ZAIRAN
 CREA 46853-5

ARQUITETÔNICO

ÁREA TOTAL: 12,00 m²

ESC.: 1/100

DATA: MAIO/2022

PRANCHA:
 ÚNICA